

Bridging the gap between city and countryside: the role of urban agriculture

Giampiero Mazzocchi, PhD

CREA – Council for Agricultural Research and the Analysis of Agricultural Economics

Outline

- Mapping the gaps
- Modelling UA
- Multi-layering of the policies
- Bridging the gap

Where is the gap?

Geographical | Distance from supply areas

Economic | Proliferation of intermediaries

Political | Low capability in driving food systems

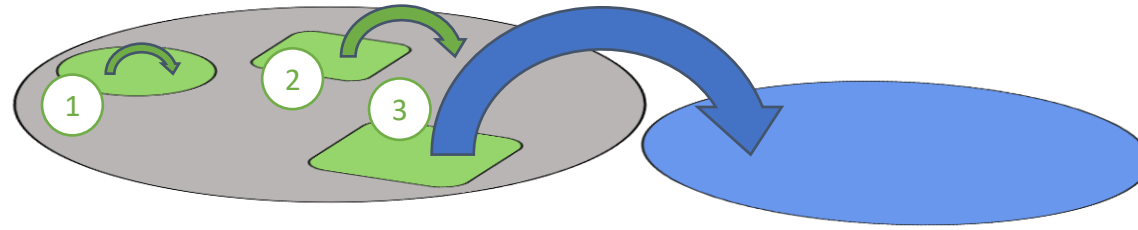
Cognitive | Ignorance about the conditions of production



Urban Agriculture: how to define it?



1. Markets



- City
- Urban Agriculture
- Other cities/global markets

2. **Social value** | Community gardens, educational and therapeutic gardens, social agriculture, with the relative social benefits

3. Spatial dimension

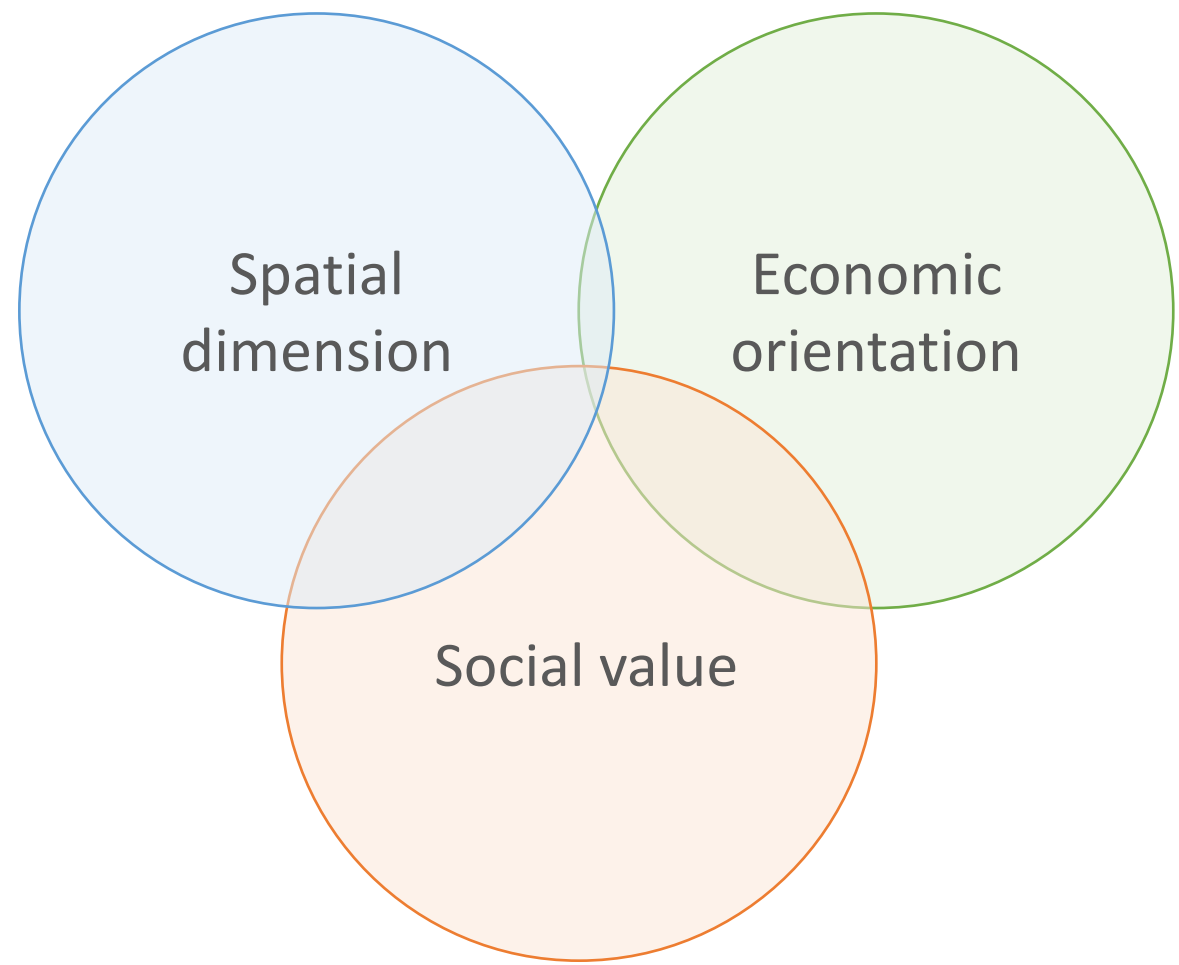
Rooftop gardens Interstitial agriculture Urban gardens Multifunctional agriculture ... Productive peri-urban agriculture

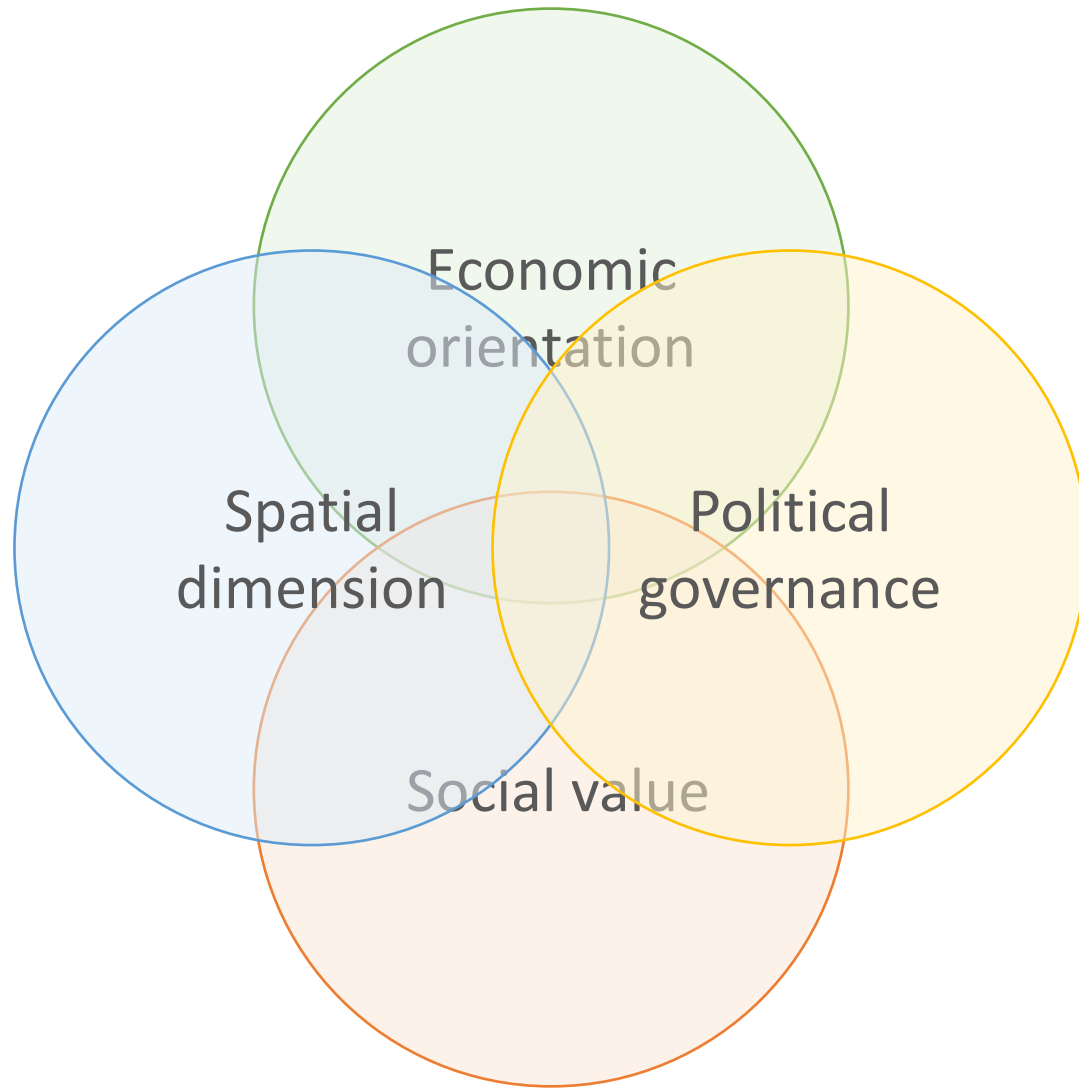
City



Countryside

URBAN AGRICULTURE ≠ URBAN GARDENS

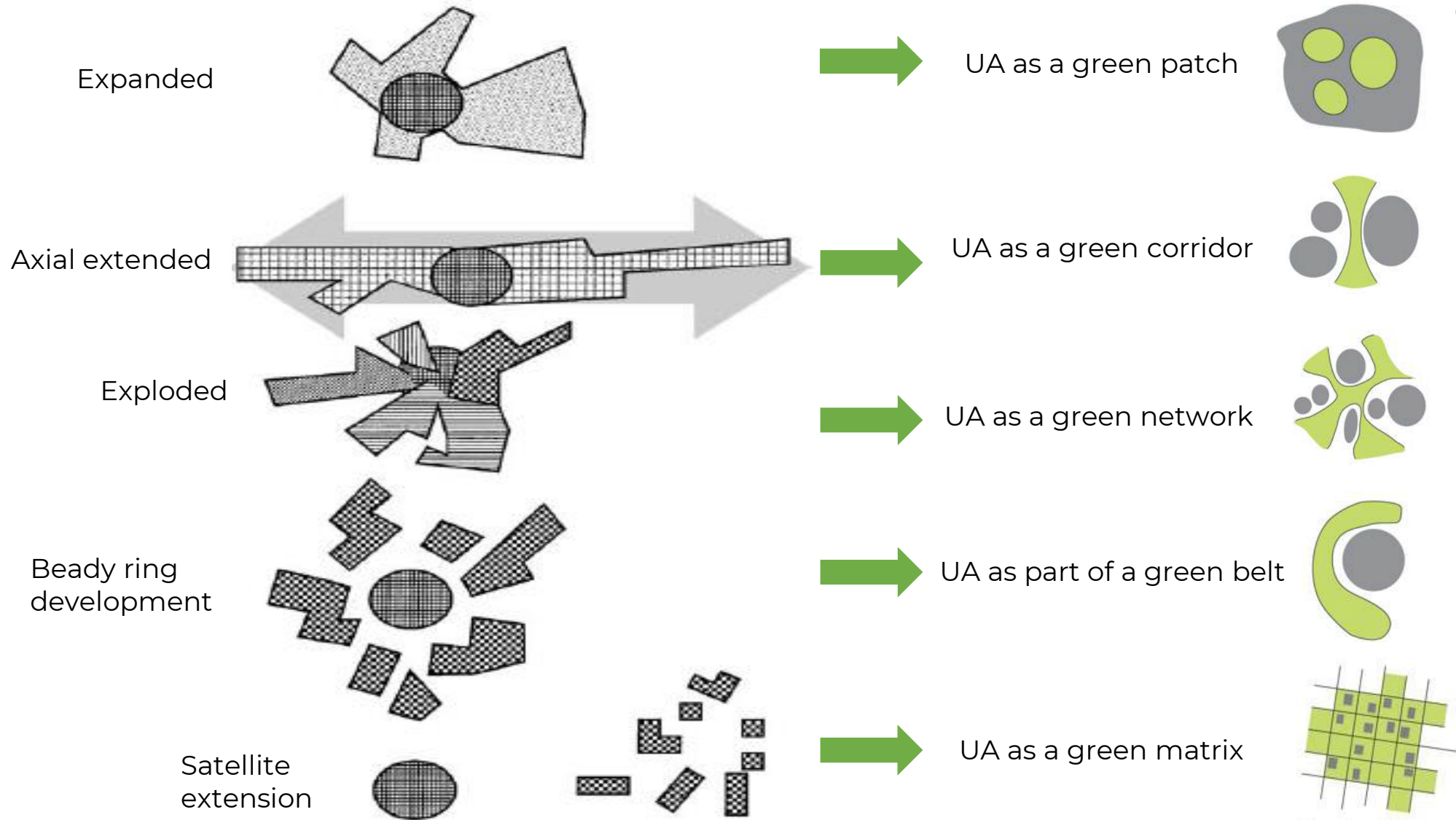




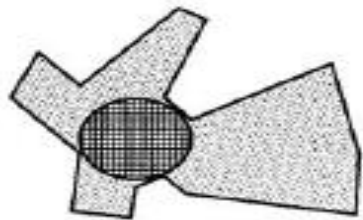
Urban Agriculture is strongly linked to the collaboration between the actors involved, both citizens and farmers, and to bottom-up construction processes of decisions and the daily management of places

This has significant implications in the definition of policies, in which public authorities assume the key role of supporter, conflict composer and political decision maker.

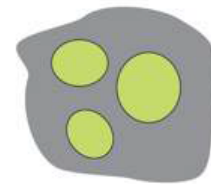
From urbanization patterns to UA models



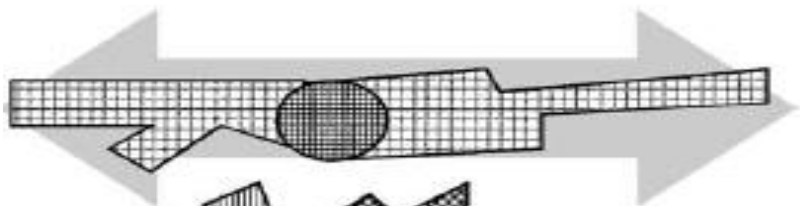
Expanded



UA as a green patch



Axial extended



UA as a green corridor



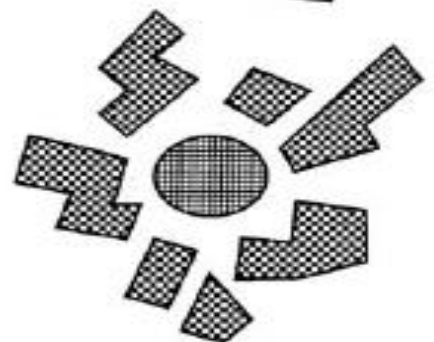
Exploded



UA as a green network



Beady ring development



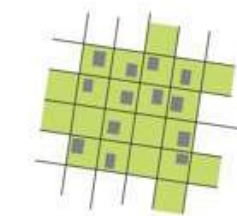
UA as part of a green belt



Satellite extension



UA as a green matrix



The challenges of (peri)-urban agriculture



Land | Competitions for alternative uses of land, land ownerships

Resources | Water, energy

Rural areas | Productive urban agriculture must face other challenges compared to rural areas (competition for the use of streets, e.g.)

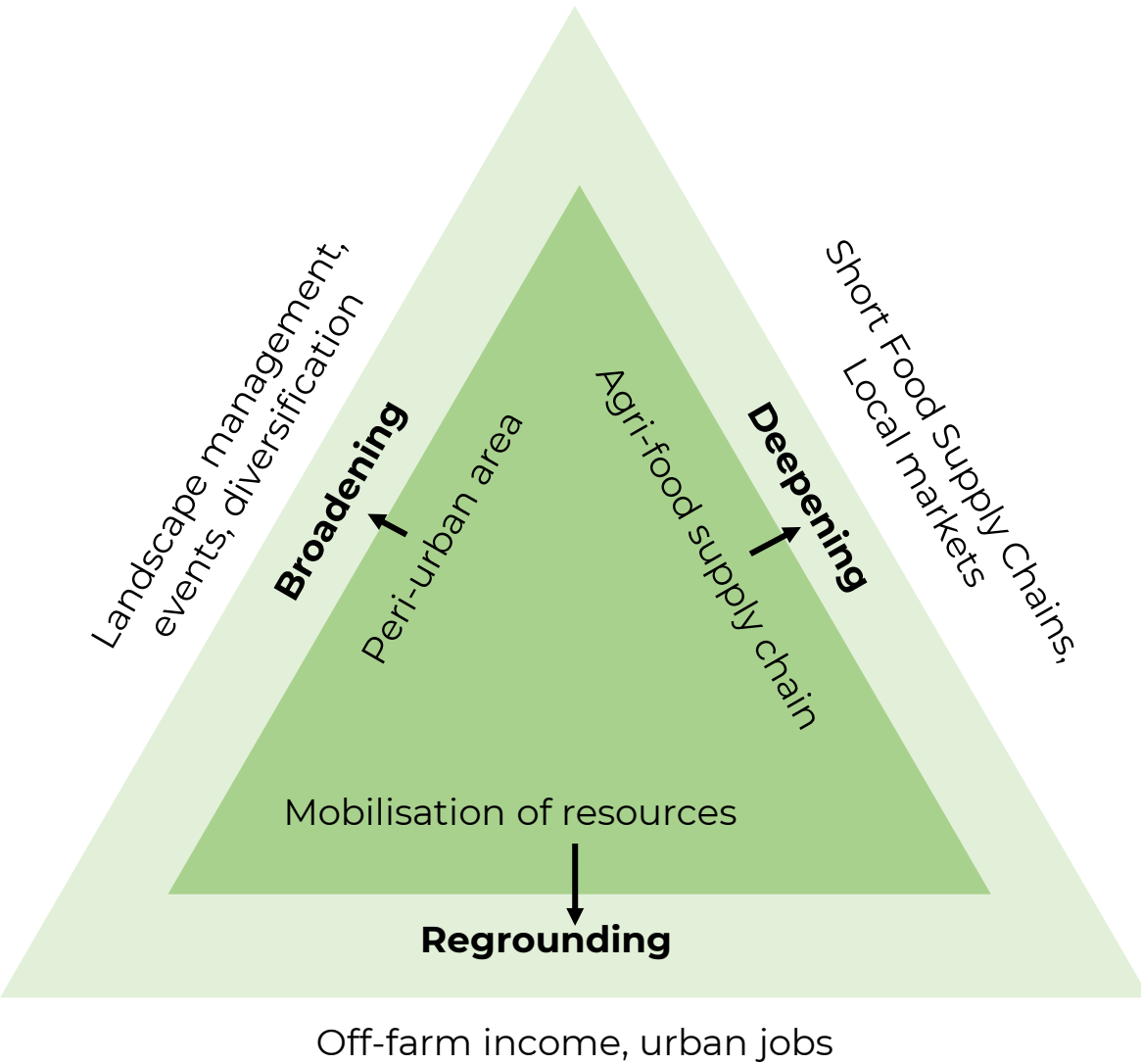
Green gentrification | Increased real estate values

Ecosystem disservices | Coexistence between city and food production



"We're waiting for the city to come to us..."

City-proximity adaptation strategies



Traditional

Farmer continues to use the factors of production in the actual agricultural production activity

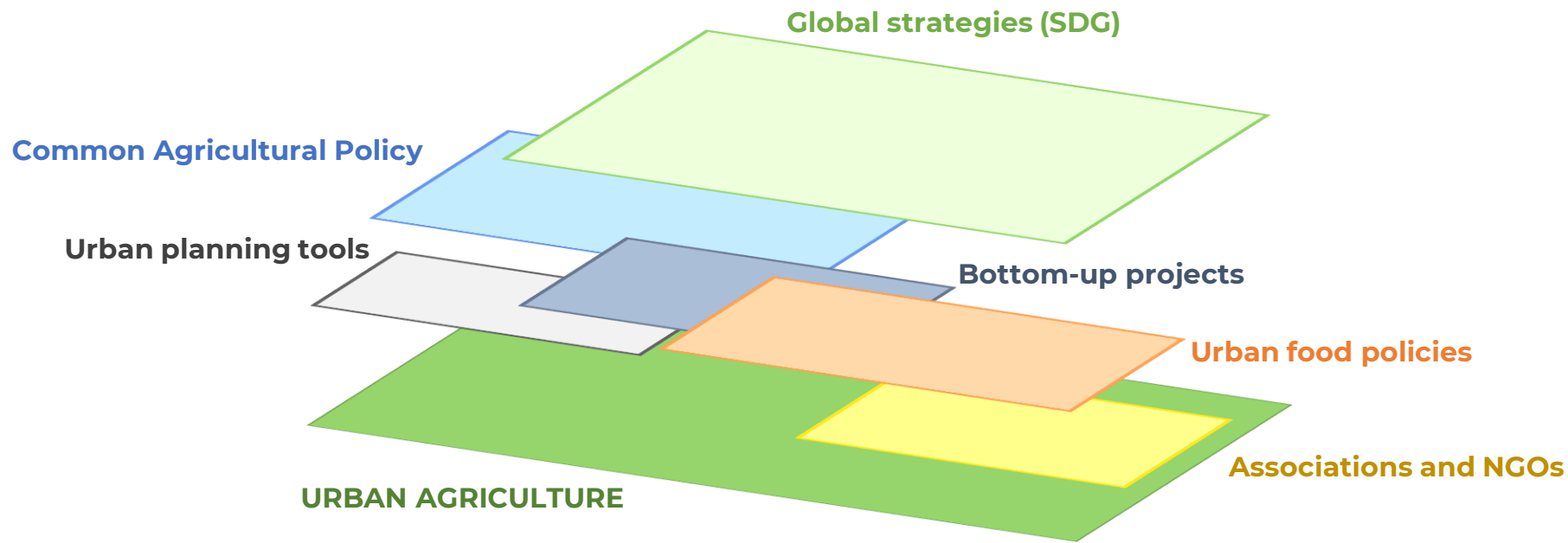
Adaptive

Farmer reacts to the urbanization process by deactivating a portion of the factors of production and relocating it to activities outside the sector (e.g. labour)

Reactive

Farmers relocate the production factors towards activities within the farm but more or less distant from agricultural activity, activating processes of diversification and enhancement of the multifunctionality of agriculture

The multi-layering of Urban Agriculture



Bridging the gap

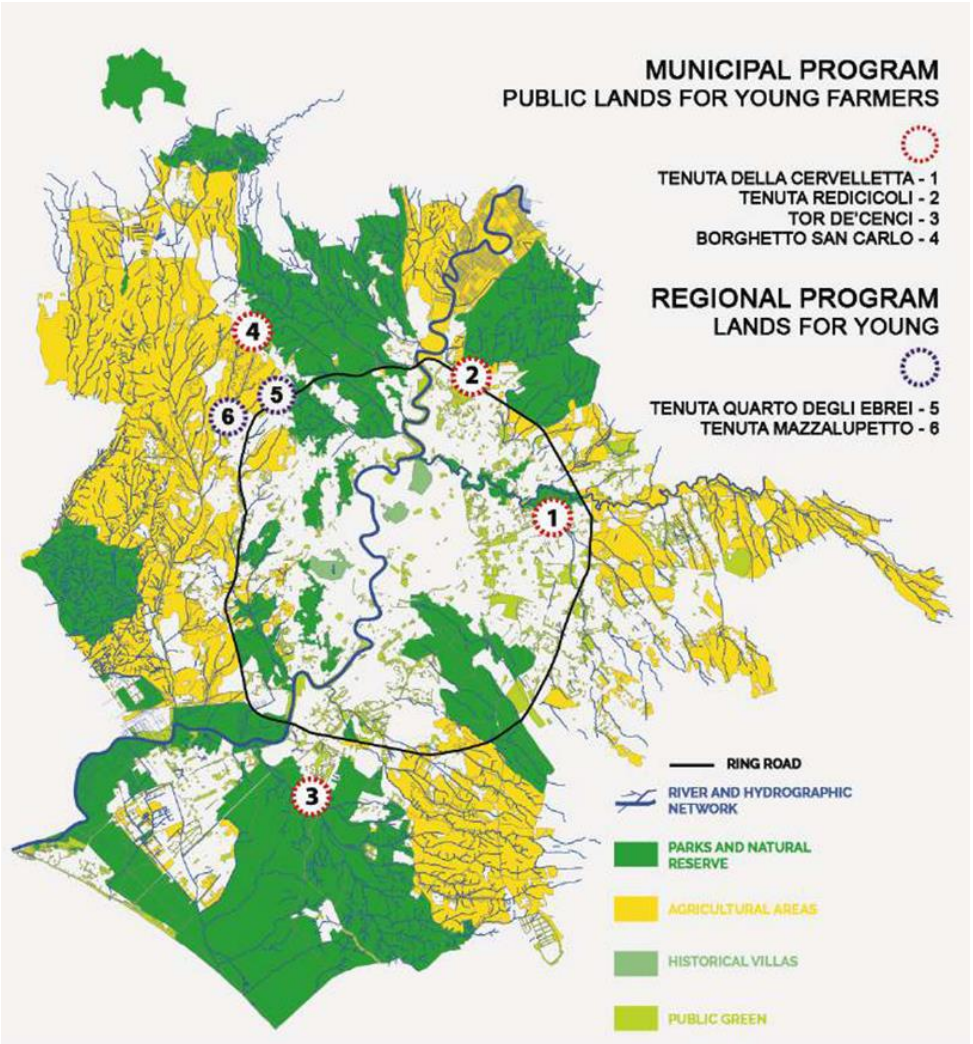
Multifunctional agriculture in urban areas: the case of Co.R.Ag.Gio.



- Legend
- Textures**
 - Urban
 - Public green areas
 - Private green areas
 - Protected areas
 - Agricultural areas
 - Paths**
 - Hydrographical network
 - Tree lines
 - Cycle pathways
 - Roads/Rails
 - Access to green areas
 - Green Infrastructures Connections**
 - Via Francigena

The types and the scope of the Ecosystem Services provided by UA are dependent on several aspects: location, proximity to urban mosaic, density of population, accessibility, connectivity with other green areas

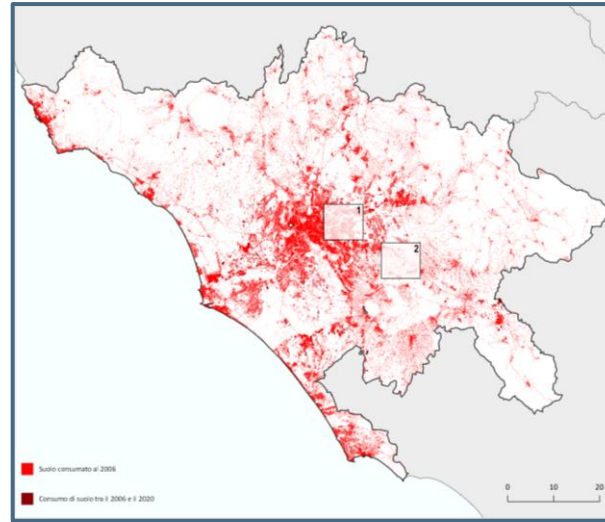
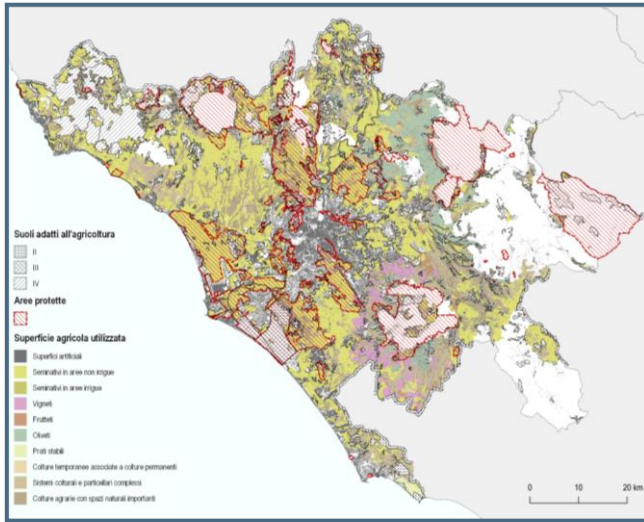
Multifunctional agriculture in urban areas: the case of Co.R.Ag.Gio.



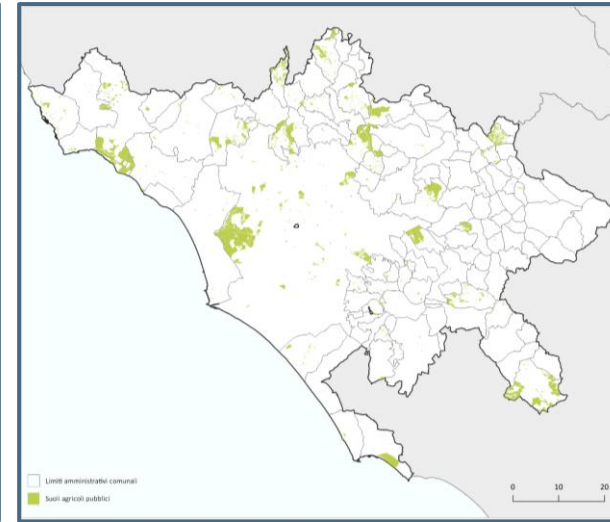
Agricultural Parks



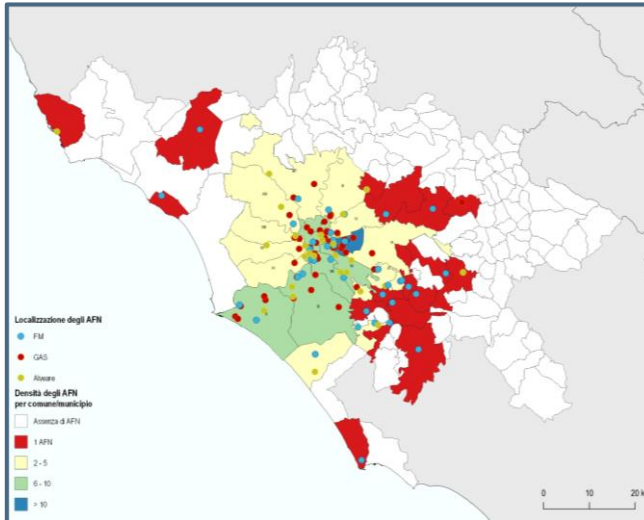
Agricultural areas with high productive value Land consumption



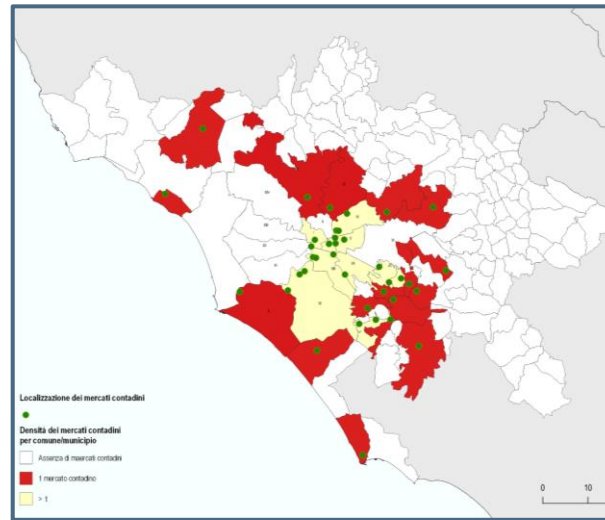
State-owned lands



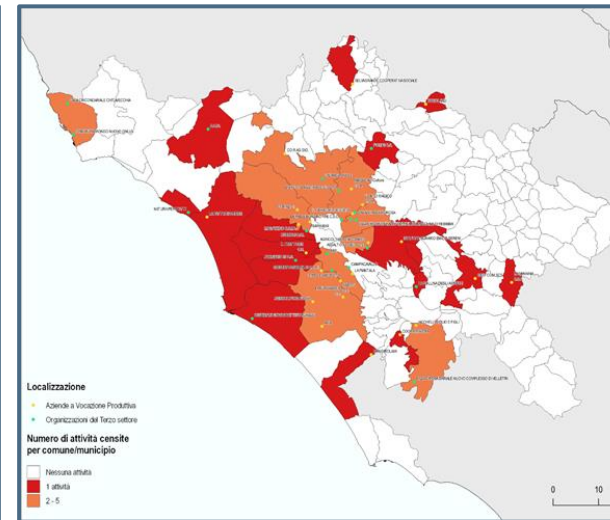
Food outlets and Alternative Food Networks



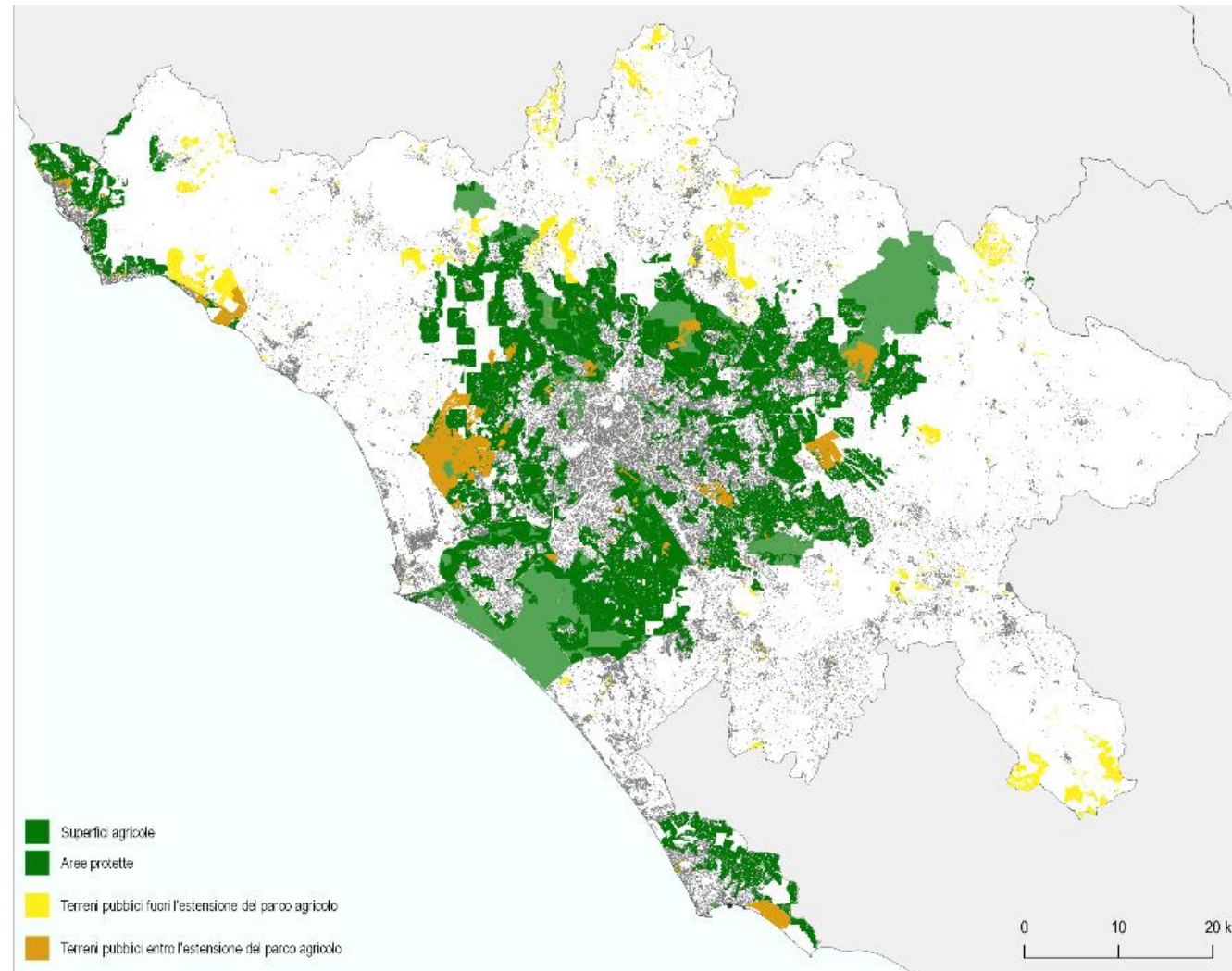
Farmers' markets



Farms and food aid associations



Agricultural Parks



ENHANCE the role of multifunctional peri-urban agriculture in terms of environmental, social and economic services

HALT environmental degradation due to constant settlement pressure which tends to fragment natural areas and saturate precious urban "voids"

PROTECT the soil and combat its consumption

CONNECT the protected natural areas widespread around the dense urban core

CREATE a governance structure to make the local economic system more competitive



It is not possible to keep separate city planning and management from rural development

It is not possible to keep separate food systems and agricultural systems

"Today urban and peri-urban agriculture are something profoundly political and connected to the future of the cities and communities that live in them"

Tornaghi C. (2019)

The epic of Gilgamesh



The epic of Gilgamesh and his counterpart Endiku tells us that living in the city entails a price to pay.

Like Endiku, men have a duty to learn to live in a civilized way. But in the transition from nature to culture they risk losing their wild roots.

Finding the balance between city and country is vital, not only for civilization to work, but for us to discover our own balance between the wild and the civilized.

If we withdraw completely into the cities, we will lose respect for our fellowmen and for nature, losing our sense of belonging to the world.

To be truly civilized, we must remain grounded in nature.