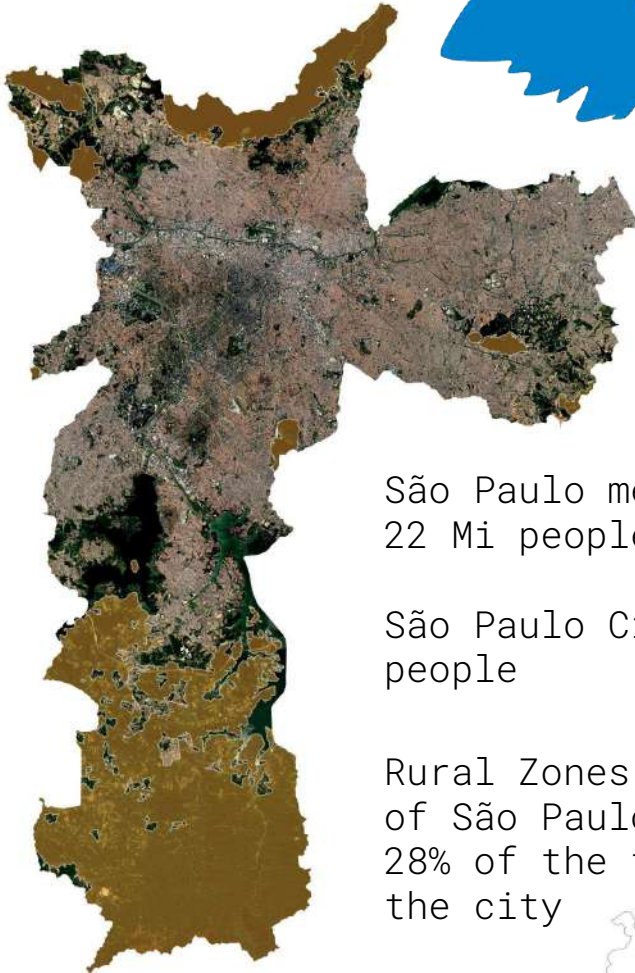


•
•
CONNECT
THE
DOTS
•

Municipality of São Paulo

30.march.2022

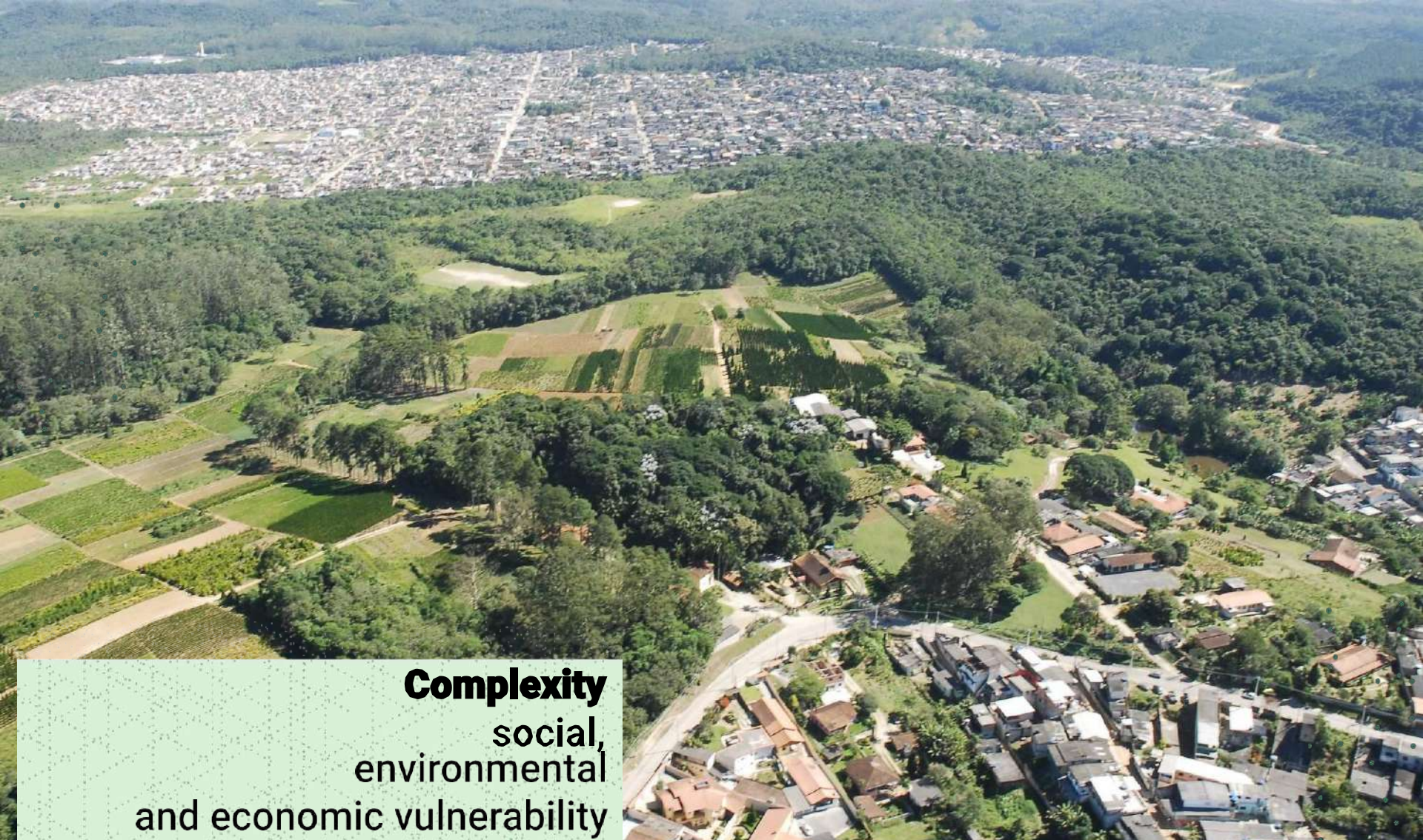


São Paulo metropolis -
22 Mi people

São Paulo City - 12,4 Mi
people

Rural Zones in the City
of São Paulo
28% of the total area of
the city





Complexity
social,
environmental
and economic vulnerability


Indigenous Territory

06

Guarani ethnic villages

30 % of the territory of the southern rural area



An aerial photograph of a rural landscape. In the foreground, a river with a wide, shallow channel flows through a lush green forest. To the right of the river, a small village with several houses and a dirt road is visible. The background shows a large body of water, possibly a lake or reservoir, surrounded by dense greenery and rolling hills under a clear sky.

The most sustainable policy for the rural territory is to recognize and strengthen its economic potential with environmentally compatible activities

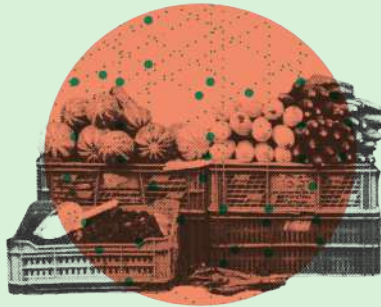
CONNECT THE DOTS



STRENGTHENING AGRICULTURE



DATA AND EVIDENCE



VALUE CHAIN

Connect the Dots (Ligue os Pontos) is a project that promotes sustainable land development in São Paulo by strengthening agriculture.

The rural area was incorporated by the 2014 Strategic Director Plan. It occupies 28% of the municipality's territory.

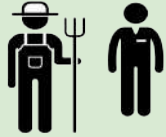
The area hosts the main water supply and therefore is imperative to the local population.

- CtD inaugurate a **new way** of operating in the territory - intra and extra City Hall articulation, innovation/adaptation focused on family farming
- The importance of **technical assistance** and instrumentalization/working conditions
- For **different profiles of farmers** it is necessary to adapt the TA, considering production chains and socioeconomic profile
- The importance of **up-to-date data** for planning and monitoring project actions
- A **complex rural area**, it is essential that medium and **long-term scenarios** be considered in order to **consolidate public policies** to strengthen agriculture, social and economic inclusion and environmental conservation

TECHNICAL ASSISTANCE



Field team assists 160 producers



Regular technical visits to properties



TECHNICAL TRAININGS



Organic inputs



Permaculture and plasticulture



Green fertilization



Capacitation and courses



Regulatory compliance to have access to the market

PROGRAMS



Soil and water



Fruit program



Demonstration Units

PES - Payment for Environmental Services



CIDADE DE
SÃO PAULO
TUDO É
MUCHO MELHOR
DESenvolvimento
Sustentável

PMSA

Plano Municipal de
Conservação e Recuperação
de Áreas Prestadoras
de Serviços Ambientais



CIDADE DE
SÃO PAULO
TUDO É
MUCHO MELHOR
DESenvolvimento
Sustentável

Aprovado por meio de
Resolução C.A.D.E.S. 262/15.

Elaborado pelo Grupo de Trabalho
Plano Municipal de Áreas de Prestação
de Serviços Ambientais (GTAPESA).

**LIGUE
OS
PONTOS**

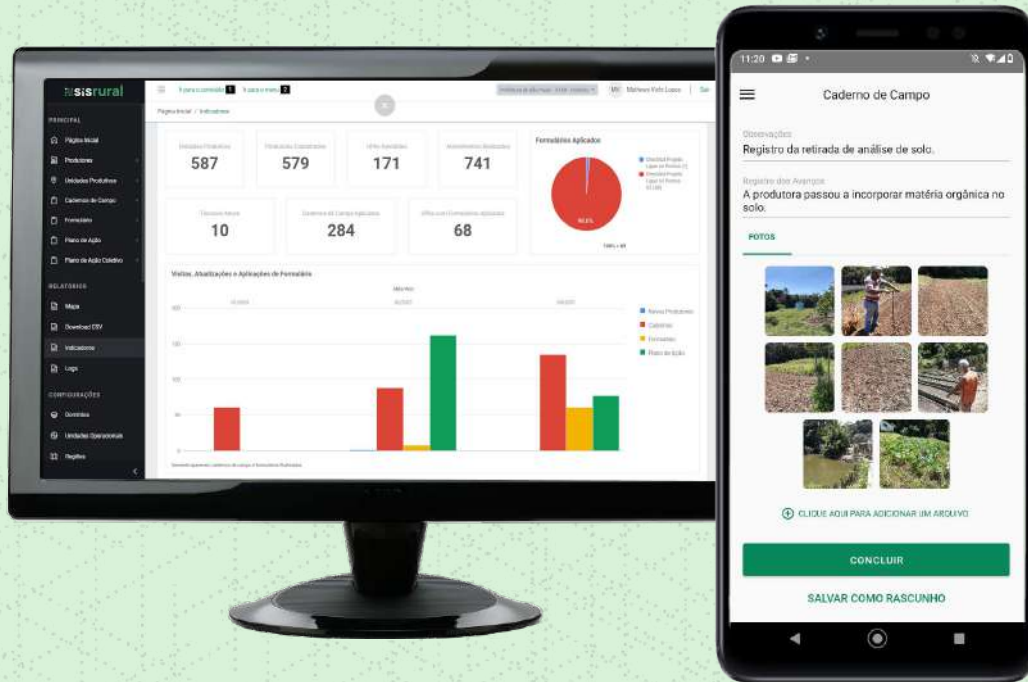
A elaboração do PMSA e sua
publicação contou com o apoio
de Biscoitão.org (Prestadores),
através do Projeto Ligamos Pontos,
coordenado pelo SINDISPRESPI.



Biscoitão.org
Prestadores

sisrural

Sistema de Assistência Técnica e Extensão Rural e Ambiental



implementation

Technical Assistance

All procedures and records within the system

implementation

Management module: dashboards and indicators

Weekly follow up

replication

São Paulo State Agricultural Secretariat

5 public policies using the system

replication

Paraná State Organic agriculture program

Cooperation agreement signed.
Defining the next steps



FIND
AGRICULTURE • MARKET
TURISM • INITIATIVES & POLICIES
PLACES & CONNECT



Digital Platform



Seals



CSAs (Community supported agriculture)

From farm to fork

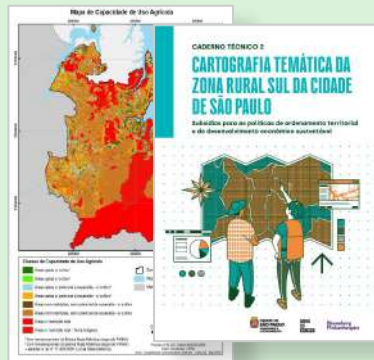
Circular Economy
Short Food Supply Chain

PRODUCER WELCOMING SCHOOL





Municipal Plan for Areas Providing Environmental Services



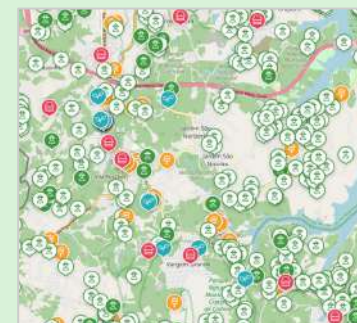
Detail scale cartography



Study on agriculture and flora of indigenous lands



Sanitation and water quality diagnostics and alternatives



Agriculture value chain data (Sampa+Rural and SisRural)



Socioeconomic, agricultural production and farmer information



Replication manuals: CSA, Sampa+Rural, SisRural



Execution reports of phases 1, 2 and 3

All publications are available at [Sampa+Rural](#)

100 CLIMATE POLICY BREAKTHROUGHS

Connecting the Dots in São Paulo

BRAZIL

DRAWDOWN SOLUTION

Reduced food waste

21,000 tonnes of food waste has been diverted from land

The city of Sao Paulo is embracing nature-based solutions. **Cities4Forests**, the city is working towards strengthening in its 107 municipal parks. After the droughts of 2019, the forest to reduce soil erosion and stormwater drainage. The urban population with agriculture and emissions from food



REDUCED FOOD WASTE

IDB Cities Network

INNOPOLIS

Urban Innovation Challenge 2020

IDB

@bid_ciudades | iedb.org/redciudadesbid

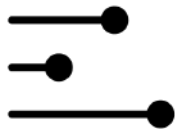
- **Ligue os Pontos** - Municipality of São Paulo, Brazil
- **Lavandería y Duchas Comunitarias en la Amazonía Peruana** - Province Municipality of Maynas, Peru



RESPONSABILIDADE SOCIOAMBIENTAL



CÂMARA MUNICIPAL DE SÃO PAULO



acknowledgements

VÍDEOS PARA SABER MAIS



[Selos Sampa+Rural](#)

(5 min)

Projeto Lige os Pontos

[Lige os Pontos: relações e negócios que transformam a cidade](#)

(5 min)

Projeto Lige os Pontos / Instituto InterElos

[A economia circular dos alimentos em São Paulo](#)

(5 min)

Ellen MacArthur Foundation /
Lige os Pontos



Thanks !

Lia Palm – liapalm@prefeitura.sp.gov.br

Agriculture Department

Secretariat of Economic Development, Labor and Tourism